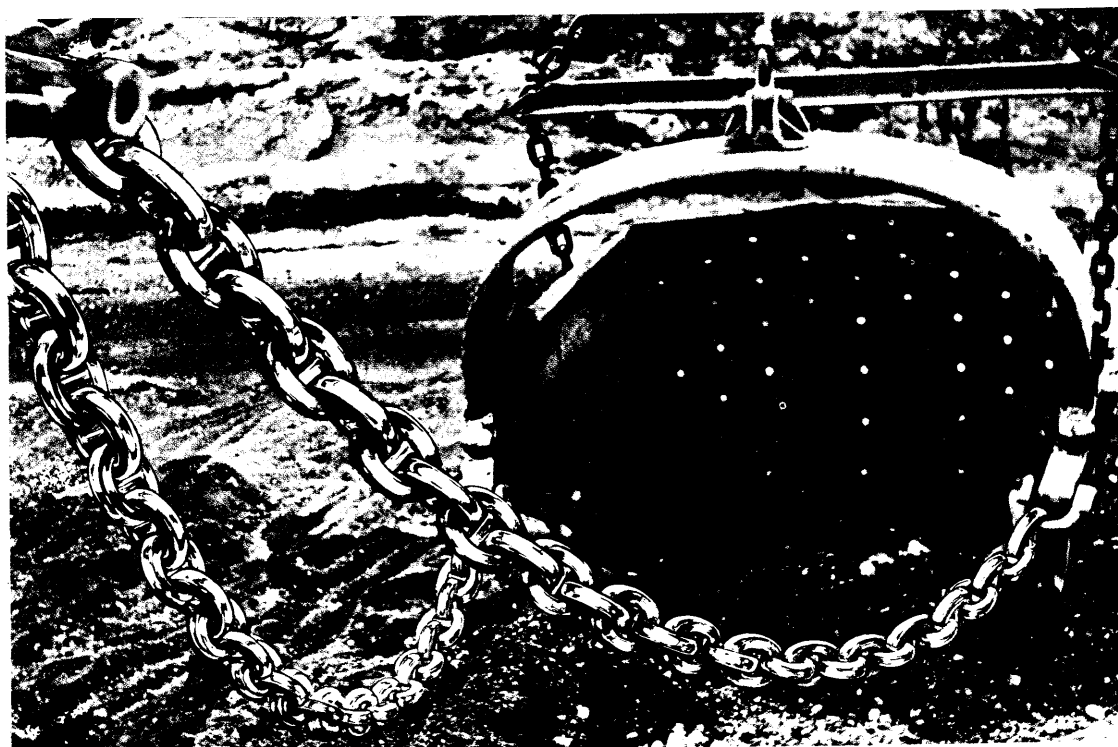




**W.J. KEATING LIMITED**

# **CAST STEEL DRAG LINE CHAIN**

## **AND ACCESSORIES**





# W.J. KEATING LIMITED

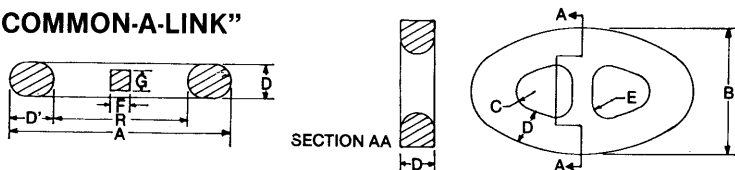
## "BIG-BITE" PLUS LINK

SIDE OF LINK SQUARED OFF TO GIVE SUPERIOR WEAR AND LONGER CHAIN LIFE

CAST INTEGRAL STUD

END OF LINK WITH ENLARGED OVAL SECTION TO GIVE FULL BEARING CONTACT AND SUPERIOR WEAR AND LONGER CHAIN LIFE

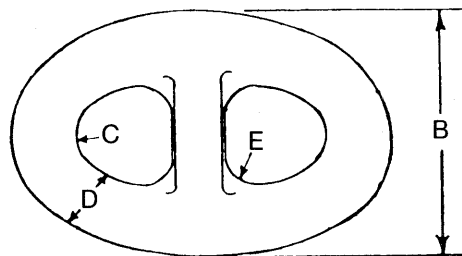
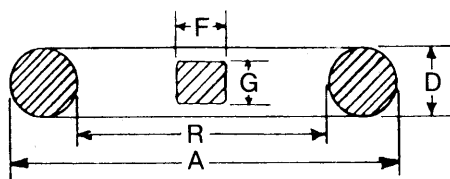
### "BIG-BITE" PLUS COMMON-A-LINK"



SIZE	R	A	B	C	D	D'	E	F	G
1½	6	9¾	4¾	1⅝	1½	1⅞	¾	¾	⅞
1¾	7	11⅞	7⅝	1⅞	1¾	2⅞	⅞	57/64	1
2	8	13	8⅝	1¾	2	2½	1	1⅓2	1⅓16
2¼	9	14⅞	9⅞	1⅞	2¼	2⅓16	1⅞	1⅞	1⅞
2½	10	16¼	10	1½	2½	3⅞	1¼	1⅞64	1½
2¾	11	17⅞	10⅞	1⅞	2¾	3⅞	1⅞	1⅓32	1⅞
3	12	19½	11⅓16	1⅓16	3	3¾	1½	1⅓64	1⅓16
3¼	13	21⅞	12⅓16	1⅓16	3¼	4⅞	1⅞	1⅓64	1⅓16
3½	14	22¾	13⅞	2⅓16	3½	4⅞	1¼	1⅓32	2⅞
3¾	15	24⅞	14½	2⅓16	3¾	4⅓16	1⅞	1⅓64	2¼
4	16	26	15⅞	2⅓16	4	5	2	2⅓16	2⅞
4¼	17	27⅞	16¼	2⅞	4¼	5⅓16	2⅞	2⅓32	2½
4½	18	29¼	17¼	2¾	4½	5⅞	2¼	2¼	2¼
4¾	19	30⅞	18¼	2⅞	4¾	5⅓16	2⅞	2⅓16	2⅞
5	20	32½	19	3	5	6¼	2½	2⅓32	3
5¼	21	34⅞	19⅞	3⅞	5¼	6⅓16	2⅞	2⅓32	3⅞
5½	22	35¾	20¼	3¼	5½	6⅞	2¾	2⅓16	3¼
5¾	23	37⅞	21⅓16	3½	5¾	7⅓16	2⅞	3	3½
6	24	39	22⅞	3⅞	6	7½	3	3⅓32	3⅞



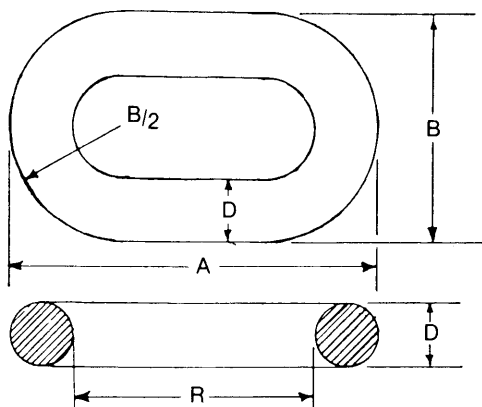
## REGULAR COMMON LINK "A"



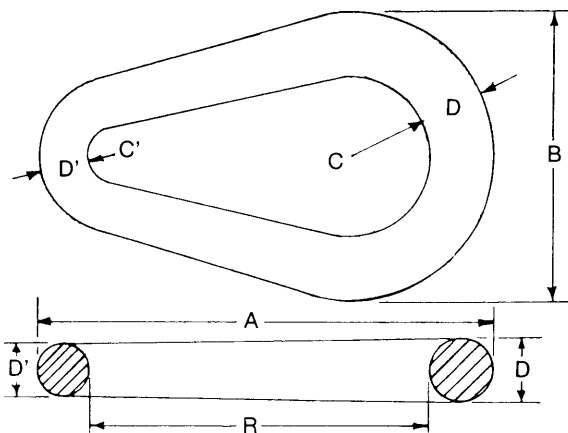
SIZE	R	A	B	C	D	E	F	G
1¼	5	7½	4½	25/32	1¼	5/8	7/8	¾
1⅝	5½	8¼	4⅛	7/8	1⅝	11/16	15/16	13/16
1½	6	9	3⅝	15/16	1½	¾	1	7/8
1¾	7	10½	6⅛	1¼	1¾	7/8	13/16	1
2	8	12	7⅛	1¼	2	1	1⅝	13/16
2⅛	8¼	12⅝	71/16	19/32	21/16	11/32	113/32	17/32
2⅜	8½	12¾	7⅞	15/16	2⅜	11/16	17/16	1¼
2¼	9	13½	8⅞	1⅝	2¼	1⅞	1½	1⅝
25/16	9¼	13⅞	8⅞	113/32	25/16	15/32	117/32	113/32
27/16	9¾	14⅞	813/16	115/32	27/16	17/32	15/8	113/32
2½	10	15	9	1½	2½	1¼	111/16	1½
2⅞	10½	15¾	97/16	19/16	2⅞	15/16	113/16	19/16
211/16	10¾	16⅞	8⅞	119/32	211/16	111/32	127/32	119/32
2¾	11	16½	9⅞	1⅝	2¾	1⅝	17/8	1⅝
213/16	11¼	16⅞	10	111/16	213/16	113/32	115/16	111/16
3	12¼	18⅞	11	127/32	31/16	117/32	2⅞	127/32
31/16	12¼	18⅞	11	127/32	31/16	117/32	2⅞	127/32
3⅝	12½	18¾	11¼	1⅞	3⅝	19/16	2⅞	17/8
3¼	13	19½	1111/16	115/16	3¼	1⅞	23/16	115/16
3½	14	21	12⅞	21/16	3½	1¾	2⅞	2⅞
3¾	15	22½	13½	23/16	3¾	1⅞	29/16	2¼
4	16	24	14⅞	25/16	4	2	2¾	2⅞
4¼	17	25½	15¼	2⅞	4¼	2⅞	27/8	2½
4½	18	27	16¼	2¾	4½	2¼	3	2¾
4¾	19	28½	17¼	2⅞	4¾	2⅞	3¼	2⅞
5	20	30	18	3	5	2½	3⅞	3
5¼	21	31½	18⅞	3⅞	5¼	2⅞	3⅞	3⅞
5½	22	33	19¾	3¼	5½	2¾	3¾	3¼
6	24	36	21⅞	3⅞	6	3	4⅞	3⅞
6½	26	39	237/16	4	6½	3¼	415/32	4
6½	28	42	25¼	4⅞	6½	3½	4¾	4¼
7	28	42	25¼	4⅞	7	3½	4¾	4¼



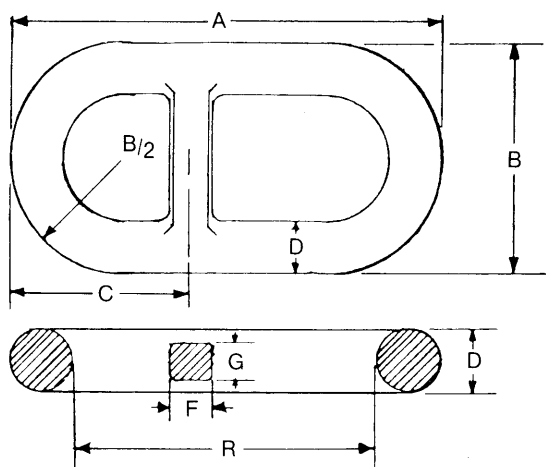
## END LINK "E"



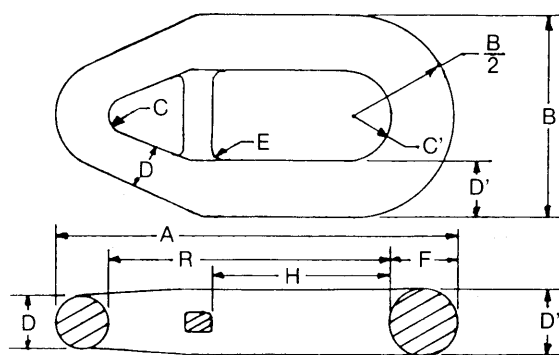
## PEAR-SHAPED LINK



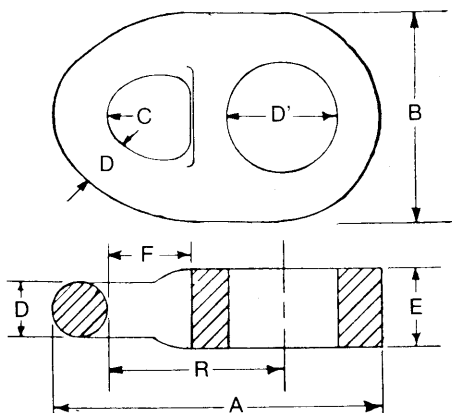
## END LINK WITH STUD



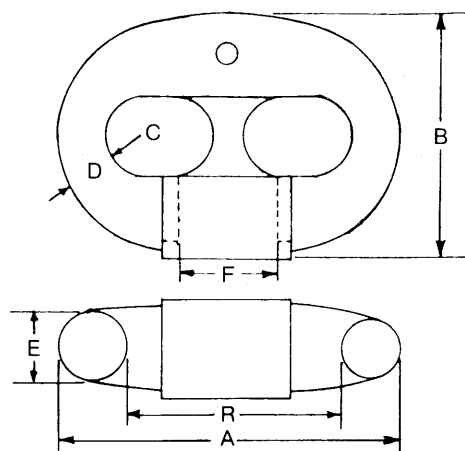
## PEAR SHAPED LINK WITH STUD



## PIN-TYPE OR BUSHED END LINK



## JOINING LINK



SHACKLES AND CLEAVES, TRUNNIONS, HITCHES AVAILABLE ON REQUEST